



Upstairs, 267 William St
Northbridge 6003
gallery@papermountain.org.au
papermountain.org.au

Exhibition Application Pack

Deadline: Friday 31 March, Midnight AWST

OVERVIEW

Paper Mountain is seeking proposals for our 2017-18 Exhibition Program for the months of **September, October, December, January ('18), and February ('18)**. Selection is based on the strength of the application, suitability of the project for the space and the resolution of the ideas underpinning the artist's practice. Call out for the exhibition program is open to practicing artists and curators of all mediums and disciplines.

WHO CAN APPLY

Paper Mountain accepts applications from local, interstate and international artists for both solo and group exhibitions. We aim to foster a diverse arts community, supportive of all creative practitioners, inclusive of (but not limited to) visual artists, performance, ephemeral installations, craft practitioners, fashion, and sound artists. Paper Mountain has callouts for proposals for its exhibition program from emerging and established artists, curators, collectives, and organisations twice a year.

ABOUT US

Paper Mountain is a Perth based artist run initiative with a gallery, co-working space (The Common Room) and studios, located in the heart of Northbridge, WA. Paper Mountain aims to provide a stimulating space that is professional and accessible to a range of creative practices and projects. We endeavour to support innovative projects and encourage critical dialogue between artists and audiences. Paper Mountain presents a top notch program of surprising new art and ideas, and is dedicated to supporting a broad span of contemporary art projects. Our space is malleable and we use it to nurture experimentation, to challenge artists' practices, and to encourage collaboration and skill/resource sharing.

EXHIBITION AND SUPPORT

Paper Mountain aims to provide a stimulating space that is professional and accessible to a range of creative practices and projects. Key objectives are to nurture experimental and interdisciplinary approaches to artistic practice, to support artists at any stages in their career and to show work that perhaps can't be shown anywhere else. The cost to exhibit at Paper Mountain is \$850. Paper Mountain is a volunteer run ARI. No commission is taken for the sale of the works. Paper Mountain does not facilitate the payment and delivery of any sold artworks. This is to be directed to and by the artist. The fee to exhibit is divided into two payments with approximately half required for confirmation of acceptance of the exhibition. Additionally, a \$200 returnable bond will be required paid before installation of the exhibition commences. This bond will be returned upon conclusion and exit of the gallery where the space is returned to the original condition and keys are returned to the gallery manager.

The fee cost covers*

- 3 week space hire (Inclusive of a 16 day public program and install/deinstall time).
- Openings are generally on the first Friday night opening of the exhibition from 6pm – 8pm.
- The design and distribution of an electronic invitation.
- The design and distribution of a printed promotional poster
- The design and printing of a high quality A5 (12 page) colour exhibition catalogue
- Work with the artist to produce a room sheet
- Advertising and listing across various printed and online art resources
- Support from our media officer to promote the exhibitions in public media
- Staff to support opening night
- Staff to invigilate the exhibition 7 days a week. Exhibitions are open 9.30am – 5.00pm.
- Artist talks arranged as part of the exhibition program to promote the exhibition
- Social media promotion on Paper Mountain's accounts by the artists to promote exhibition and professional practice.
- Advice for curatorial (exhibition set up) and professional development.
- Provide basic installation tools and advice

INFORMATION FOR ALL APPLICANTS

When preparing your submission, please consider:

- The clarity of your proposal.
- The quality and consistency of the support material provided. Support material should effectively demonstrate the aims of the proposal as well as your overall practice.
- The feasibility of the project within the given space and time constraints.

Paper Mountain assesses applications based on:

- Artistic merit
- Responsiveness to Paper Mountain's space and environment
- Diversity of art form and demographics
- Evidence of experimental and interdisciplinary practices

Applications are evaluated by a panel of four professional peers, including two Paper Mountain co-directors. Applicants will be notified of the outcome of their submission within 1 month of the closing date. Successful applicants will be required to enter into a contractual agreement with Paper Mountain. This agreement details all aspects of developing and/or exhibiting work with us, including promotional requirements and access to the space. Should you seek any information regarding applications please email gallery@papermountain.org.au

**Please note all inclusions may be subject to change*

GALLERY SPECIFICATIONS

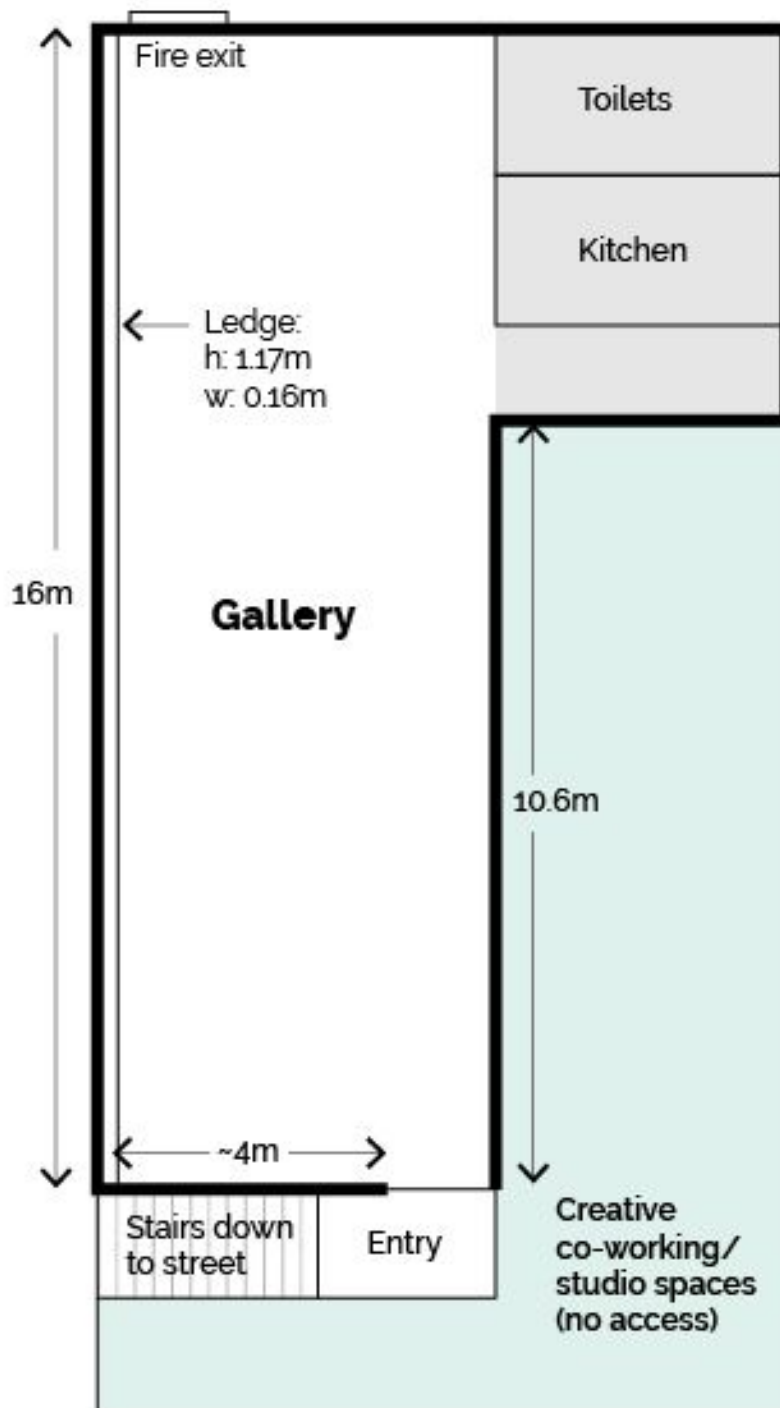
Gallery dimensions: 4.3m x 16m with 4m high ceilings.

Four long rectangular windows run down the 16m wall.

The 16m and 4m wall are both cement, with the 10.6 wall being MDF.

The back wall is a plaster board style wall.

Please consider the space when writing your application for exhibition.



SUBMISSION REQUIREMENTS

Your application must be submitted as a single PDF document, with all of the information listed below to be included.

CONTACT INFORMATION

If submitting a group or curated proposal, one set of contact details will suffice.

1. Full name (if you are exhibiting with a group, names of other artists)
2. Address
3. Phone Number
4. Email Address
5. Artist Website/s

EXHIBITION INFORMATION

6. Exhibition title
7. Exhibition Summary (Max. 300 words)
8. Preferred months

SUPPORT MATERIAL

9. Artist CV/s (Max. 1 page per artist)
10. Supporting images/videos (Max. 5 works) (images max 1mb)
11. All support material must be supplied within the single A4 PDF document.
12. Specify if the support material is the actual work you are hoping to exhibit, or if it is indicative of the style.
13. Below each image supplied, list in order: title, material, date, dimensions.
14. For video work please provide a link to view the work online.

CHECKLIST

Please ensure your single A4 PDF document includes:

- Contact Information
- Exhibition Information:
 - Artist Statement
 - Exhibition Summary
 - Preferred Months
- Support Material:
 - CV
 - Images/video links